

-INSTALLATION TIME-

Approximate installation time: 30-45 minutes, based on installer

-TOOLS REQUIRED-

- Crayon/Marker
- Rivet nut tool (included)
- 7/16" and 1/2" wrenches or sockets
- Tape Measure
- T25, T45 torx head wrenches
- 17/64", 25/64" drill bits, drill, and center punch

-PARTS INCLUDED-

AeroBox™, complete with door, (2) keyed cam locks, and load floor

Kit #1: All Assemblies – Wheels

- (2) Wheels
- (2) Axle bolts
- (2) Main door keys

Kit #2A: Premium Assembly – Tie down Hardware

- (6) ¼"-20 x 5/8" bolts, Nylock™ nuts, washers
- (3) Tie down rings and brackets

AeroBox™ with
Door and Loadfloor



Kit #2B: Premium Assembly – Striker Bracket Hardware

- (2) Striker mounting Brackets
- (2) Strikers, (2) 5/16"-18 Nylock™ nuts, (2) 5/16" washers
- (10) 5/16" Striker spacer washers
- (6) ¼"- 20 Pre-bulbed threaded inserts
- (7) ¼"- 20 x 1 ¼" button head cap screws & washers (1 extra for insert install)
- (1) Threaded insert install tool



(2) Divider panels

Read all instructions before installing or using this product. The AeroBox™ will fit most full-size truck beds with a 58" min. tailgate opening width (including liner thickness, if present). When a plastic drop-in liner is present, some local modification of the liner may be required. Please view helpful installation video and FAQ's on our website, or call Customer Service at (844) 918-3688 if you have any questions. Any modification or unintended use of this product shall immediately void all manufacturer's warranties. The manufacturer disclaims all liability for injuries to persons or property resulting from any modifications to, unintended use, or improper assembly of this product.

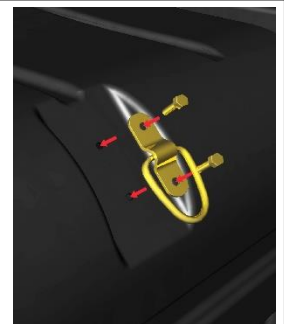
WHEEL INSTALLATION

1. Place AeroBox™ upside down on clean/non-abrasive surface
2. Locate the threaded inserts in the wheel pocket
3. Insert the axle (wheel bolt) through the bearing on the wheel and thread in to the threaded insert using ½ inch wrench or socket until tight. Do not overtighten.
4. Repeat for remaining wheel.



TIE DOWN RING ASSEMBLY INSTALLATION

1. Place the AeroBox™ right side up so you can access the aerodynamic (rounded) side of the AeroBox™.
2. Locate drill centering marks at each tie down location and drill a 17/64" hole at each mark.
3. Insert ring in bracket recess and place assembly so holes align with drilled holes on AeroBox™.
4. Insert ¼"-20 X 5/8" hex bolts through the holes toward the inside of the box. Place a ¼" washer and ¼"-20 Nylock™ nut on the end of each bolt from the inside of the box and tighten.
5. Repeat this process for the remaining 2-tie-downs, tightening each bolt assembly with 7/16" socket and wrench. The rings should move freely in the brackets.

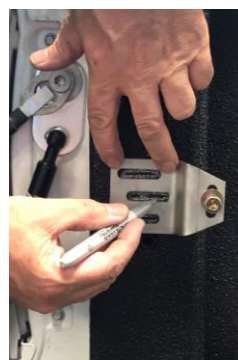


STRIKER BRACKET INSTALLATION

1. Check fit by placing AeroBox™ in upright position and sliding it into the tailgate opening of your truck until the door of the AeroBox™ would be flush with the tailgate when the tailgate is closed, but does not inhibit closure. The AeroBox™ should be centered in the opening. Make sure there will be no interference with closing the tailgate by closing the tailgate with the box in position.



2. Measure 10 ¼" from the bed floor up the tailgate opening rail and mark the location. Position the striker bracket with the offset towards centerline of the truck over the mark such that the center slot is centered vertically over the mark. Mark the interior of each slot. **Note:** The back edge of the bracket should typically be nearly flush with the back edge of the tailgate opening rail in most cases. Positioning it more forward on the rail will increase the gap between the box and the tailgate, which may be necessary in some cases where there is interference with closing the tailgate. In some cases where there is minimal flat mounting area on the tailgate opening rail, the fore-aft position of the bracket should maximize engagement with the flat area. However, the rear edge of the bracket should never be rearward of the rear edge of the tailgate opening rail.

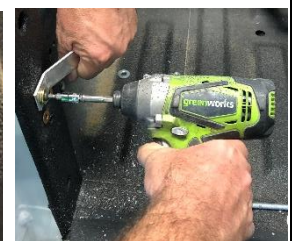
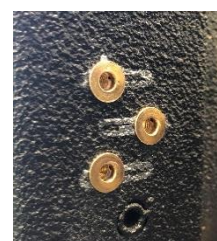
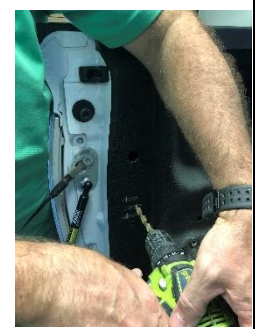


3. Mark locations for drilling attachment holes centered vertically within each slot. Offset fore-aft locations of marks between center slot and top and bottom slots for greatest bracket retention strength. Center punch each marked location to aid drilling, so bit does not wander from your mark. Drill a 25/64" hole at each location (3/8" drill bit will work if you don't have a 25/64").

Note: Leave some space from the end of each slot with your marking to allow for some fore-aft adjustment of the bracket.

Hint: If a plastic liner is present, drill holes through liner and sheet metal.

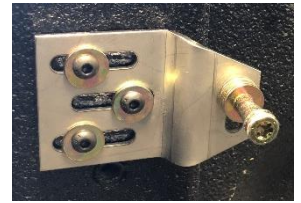
4. To secure threaded inserts, assemble a washer on a ¼"-20 cap screw and extend screw through the hole in threaded insert assembly tool. Thread insert on to screw until tight and place the insert through the previously drilled holes. Grasp threaded insert assembly tool tightly to keep it from rotating and flush with sheet metal while tightening screw with T45 torx driver (impact driver preferred) until threaded insert is fully compressed (clamped tight on to sheet-metal). Be careful not to overtighten to avoid stripping threads. Unscrew the cap screw when finished and repeat for other inserts.



Note: Screw/Bolt will be difficult to turn at first, gets easier as insert

begins to compress, then very difficult when fully compressed. A ¼"-20 hex head bolt can be substituted for this step with a socket wrench or impact wrench. An extra cap head screw has been included in case one is damaged.

6. Install the striker brackets using washers and ¼"-20 cap head screws at each threaded insert location (brackets work for either side). Loosely tighten each screw.
7. Install the AeroBox by sliding the box forward in the bed while roughly aligning the claw latches on either side of the box with the installed strikers. The strikers should align vertically with the recessed channel on the sides of the boxes, leading to the claw latch. They should also engage the claw latches when the mushroom head of each striker is able to clear to the inside of each latch simultaneously, as shown.
8. If necessary, adjust the striker length by removing the nut on the striker and adding spacer washers to the stem of the striker. The number of washers will depend on the width of the tailgate opening of your truck per the table below:



Tailgate opening width (inches)	Typical number of spacer washers
58 ½"	1-2
60"	3-4
60 ½"	5-6

9. If necessary, adjust the height of the striker by loosening the striker nut and adjusting its position in the vertical slot until it is centered vertically in the alignment channels on the AeroBox and the latch mechanism (typically 10 ¼" from top surface of bed floor). Tighten nut securely
10. In most cases, no fore-aft adjustment of the striker brackets should be necessary. However, some adjustment is possible by loosening the attachment screws and slide the bracket forward or rearward within the available slot length.
11. After all adjustments are made, the AeroBox should smoothly engage the latches simultaneously and "click" in place. Make sure all nuts are tight. Re-check tightness occasionally.
12. The box can be "disengaged" and easily removed from the bed by opening the door and lifting on each of the release handles. Once released, close and latch the door and use the door grab handle and/or sides of the box to slide out your AeroBox and roll it away to wherever it is needed!

Warning: Placing very heavy items in the AeroBox™ combined with rough terrain and/or heavy braking could result in your AeroBox™ coming loose and/or damage to the attachment assembly. Additional tie downs may be necessary in these situations.

DIVIDER PANEL INSTALLATION AND REMOVAL

Your Premium Aerobox comes with two divider panels for adjustability to secure large or small items. These panels are installed by aligning them with the grooves on the bottom of the door opening and tilting them slightly to the side while sliding them forward. Once almost fully forward, tilt them back to vertical and lock them in to the grooves. Removal is in reverse order.



ecoological™

RETURN POLICY

Ecoological™ strives to supply products which you will love. If you are not completely satisfied with your purchase, you may return a product within 30 days of receiving your order. The product must be in new condition and include original packaging, all parts and paperwork. Ecoological™ does not accept returns of used products or products returned more than 30 days after delivery. All returns require authorization and a valid return authorization (RA) number.

RETURN INSTRUCTIONS FOR NEW PRODUCTS

If you have decided to return a product, you will need a Return Authorization (RA) number. All returns require an RA number. A RA number can be obtained by contacting the Ecoological™ customer service department at (844) 918-3688. Please be prepared to give your order number, product description, and the reason for the return. You will be given a RA number and instructions to return the product. When the product arrives at Ecoological™, it will be inspected. Upon verifying the product has not been used and is still in new condition, your account will be credited. The credit will equal the cost of the product less a 15% restocking fee. Outbound and return shipping costs are not refundable. Please remember, only new and unused products can be returned. A return must be initiated within 30 days of receiving your order. Credit will not be given for returns without a valid RA number, original packaging, missing parts or paperwork. Please allow 5-10 business days to process your return credit after it has arrived at Ecoological™.

RETURN INSTRUCTIONS FOR WRONG OR DEFECTIVE PRODUCTS

If you received the wrong product or a defective product, please contact the Ecoological™ customer service department at (844) 918-3688 within 30 days of receiving your order. Be prepared to give your order number and the reason for the return. You will be given a RA number and instructions to return the product. When the product arrives at Ecoological™, it will be inspected. Upon verifying the product was shipped incorrectly or has a manufacturer's defect, you will be contacted and will have the option of receiving a replacement product or a refund. Replacement product will be sent to you at no additional cost. If you choose a refund, your account will be credited the full cost of the product including outbound and return shipping. Please remember, a return must be initiated with 30 days of receiving your order. A valid RA number, original packaging, all parts and paperwork must accompany your return. Please allow 5-10 business days to process your return credit after it has arrived at Ecoological™.

LIMITED LIFETIME WARRANTY

Ecoological LLC is proud to provide a Limited Lifetime Warranty of its products to the original purchaser. This warranty covers against manufacturer defects related to workmanship or materials. Surface finish/color is covered for up to 3 years from the purchase date. This warranty will apply to the product when it is used under normal conditions and for its intended purpose. The warranty does not cover, nor can Ecoological be held responsible for, normal wear and tear, damage caused by modifications or alterations, unintended uses, improper installation, neglect, or accidents. Ecoological is not responsible or liable for personal property which is stored in, or interacts with Ecoological products. Furthermore, Ecoological will not be held liable for direct, indirect, or incidental or consequential damages resulting from the use of the product. If Ecoological determines that there is a covered defect, Ecoological will replace the product with the same or similar product, or at Ecoological's sole option, refund the product purchase price.