



Installation Manual – Additional Detail for Formed Liners

www.ecological.com

©2013 Ecological

03/2013

ecological

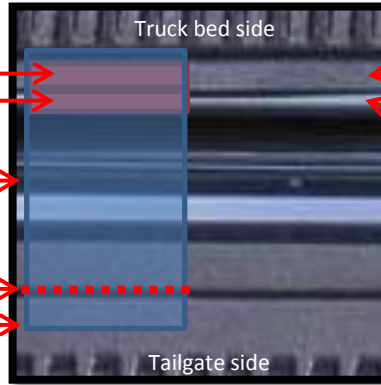
The following page includes additional installation instructions for truck owners with formed liners. Please review the standard installation instructions included in your GapShield kit for complete instructions and refer to this additional sheet for installation option details for your formed liner.

DIRECTIONS FOR USE

2-strips of high strength 3M foam tape, 1 on liner, 1 on truck bed

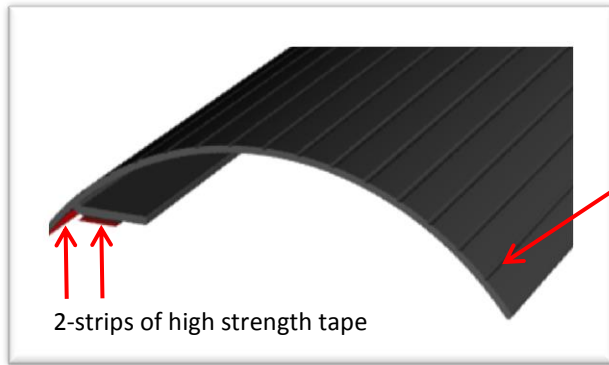
GapShield

Free end can be trimmed to lay down in recess when tailgate fully open (flat) or extend beyond recess on tailgate side (default)



Flat rear edge of liner (non-corrugated)

Exposed painted surface of truck bed. May need to be slightly trimmed for more bonding surface area (width of one strip of tape)



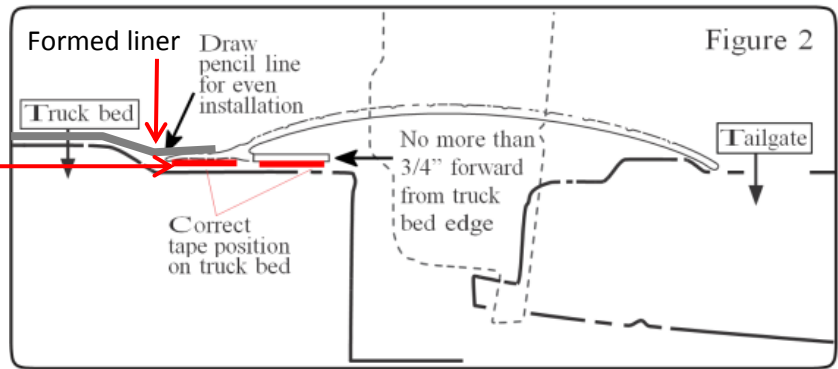
GapShield width can be easily trimmed at these grooves



Installation Option 1 – Tape on rearmost flat edge of formed liner AND exposed painted bed surface

Extend taped area underneath the formed liner.

Make sure the painted surface is cleaned before applying adhesion promoter (included in your GapShield kit)



Installation Option 2 – Forward tape extended under liner – both tapes adhered to bed surface