

#DRO

BUMPER SHELLZ™ by *ecological*

2013-2018 Ram 1500 Front Installation

©2018 ecological, 07/2018, www.ecological.com

-INSTALLATION TIME-

Approximate installation time: 35-45 minutes

-SUGGESTED TOOLS-

- 10 mm ratchet/socket
- Plastic pry/trim tool
- Isopropyl Alcohol/clean rags

-PARTS INCLUDED- (*configuration may vary*)

- Left, Right, and Center BumperShellz™



-ATTENTION-

Read and understand all instructions before installing or using this product. Your BumperShellz™ have been specifically designed to fit your truck, so no modifications to your original equipment bumper should be necessary to successfully install your BumperShellz™. If you are uncomfortable installing the BumperShellz™ yourself, please contact a qualified professional. If after reading these instructions you have any further unanswered questions, please check out the FAQ's on our website, or view a helpful installation video at <http://www.ecological.com/ecological-video-library.html>. You may also call our toll-free number (844-918-3688 EXT.2) for help between 8 am to 5 pm Pacific Time M-F. Any modification or unintended use of this product shall immediately void all manufacturer warranties. The manufacturer disclaims all liability for injuries to persons and property resulting from modifications to, or unintended use of this product.

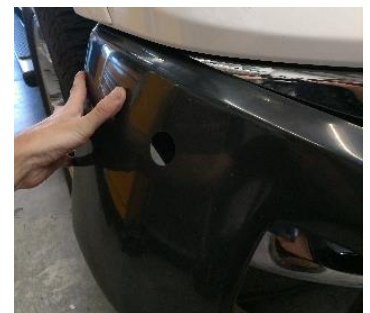
-PREPARATION-

(Please read ALL Preparation instructions before attempting to install)

- If your bumper has any significant pre-existing dents, you may want to remove the bumper and try to pound some of these out. Small dings and rust can usually be directly covered by BumperShellz™ if trim lines between plastic trim/step pad and exposed steel bumper are in their original shape. A distorted bumper will negatively affect the fit of your BumperShellz™.
- Your BumperShellz™ are assembled to your bumper by tucking the perimeter flange under the existing plastic trim pieces. It is usually sufficient to lift the edge of the trim in these areas with a non-scratching pry tool and progressively sliding the flange underneath the trim and, unless otherwise specified, should not require removal of the trim.
- Your BumperShellz™ are secured in place with 3M™ Automotive Acrylic Foam Attachment Tape. Optimal temperature for installation is between 20°C (68°F) to 38°C (100°F) and **never below** 15°C (60°F). If ambient temperature is below 15°C, a hair dryer or heat gun may be used at your discretion to warm the bumper surface. BumperShellz™ should be acclimated at "room temperature" prior to installation.
- Make sure your bumper is clean, dry, and free of debris. Use a cleaner that will remove oil/grease to clean bumper surface, followed by wiping the bonding surface areas of your bumper **thoroughly** with regular isopropyl rubbing alcohol and a clean lint-free white cotton rag or clean disposable toweling. Do not use shop rags which may have dirt or oily residues. For superior results use [3M brand Prep Solvent 70](#) or similar products available at many auto stores.

-INSTALLATION -

1. Remove lower valance panel by extracting all white clips, and removing 2 screws present on each end of the front bumper
2. Perform a "Dry Fit" of the covers by proceeding to steps 4-13 **WITHOUT** removing the red backing to the 3M tape. After your dry-fit is complete, return to step 4 and follow the instructions exactly as written.
3. Thoroughly clean all surfaces that will be contacted by the 3M tape. Whatever method used, ensure that your last step involves wiping down the areas where the 3M tape will be contacting with either regular Isopropyl alcohol or a 3M brand adhesion promoter.
4. Begin with either Side Cover. Remove the red backing to the 3M tape. Insert the top corner under the upper body panel near the wheel well.



5. Continue tucking the top edge under the upper body panel, ensuring that the double-sided tape does not touch down on the bumper surface.
6. Before allowing the 3M Tape to touch down, visually check that the cover is properly positioned. Sensor holes and fog lamps (if present) should line up with the cut-outs in the BumperShellz.
7. The holes on the underside corner of the Bumper Cover should also line up correctly, and clearances for the Bumper bolts should be correct.
8. When you are satisfied with the position of the cover, begin putting firm pressure on all areas of the cover. (Hint. Begin with the more sensitive areas such as the sensors and fog lamps)
9. Repeat process on opposite side cover.
10. Begin installing the center cover by slipping the top edge under the upper body panel. Ensure that the cover is centered and equally overlapping both side covers.
11. If sensors are present, make sure that these are lined up correctly with the pre-drilled sensor holes.
12. After you are satisfied with the fitment, put firm pressure on the center cover where the 3M tape is present.
13. Reinstall the lower valance. The lower valance should sandwich the BumperShellz between it and the bumper.



NOTE for Maximum Adhesion: The acrylic foam tape used to adhere your BumperShellz is "pressure sensitive", so making sure there is sufficient pressure applied to each of the taped areas is vital to achieve optimum adhesion of your BumperShellz™ to your bumper. It is also recommended that you come back a few hours later, or the next day, to give each BumperShellz piece another pressure rub to ensure the best adhesion. Allow the tape adhesive to set up for at least 24 hours before washing your truck. Maximum adhesion is reached after 3-5 days in temperatures above 70 degrees, longer if it is cooler. Once the adhesive has fully bonded to a properly prepared bumper surface, it is nearly impossible to remove the BumperShellz without damaging them. Please refer to "removal instructions" in the BumperShellz FAQ section on the website, should removal be necessary.

-CARE-

Care for your BumperShellz™ like you would any fine paint finish. Use high quality cleaning products designed specifically for car care.

- **Gloss finishes:** Oftentimes, minor scratches can be buffed out on the gloss finishes. Rubbing compounds can be used with a mechanical buffer, for deeper scratches.
- **Matte finishes** are much more susceptible to abrasions, leaving a "glossy sheen" on the finish, which are generally permanent. Do not attempt to buff out scratches/abrasions on your matte finish, as this will generally make the damage worse. Avoid excessive friction when trying to remove anything stuck to the matte finish surface and keep cleaning rags/water clean and abrasive free. Abrasive brush-type car washes are not recommended, as they can abrade the Matte finish. Brushless car washes are acceptable.