

# GM Mirror Overlay Installation

©2018 ecoological, 07/2018, www.ecoological.com

## -INSTALLATION TIME-

Approximate installation time: 10-15 minutes

## -SUGGESTED TOOLS-

- Isopropyl Alcohol/clean rags

## -PARTS INCLUDED- (color & model may vary)

- Left, and Right Mirror Covers
- 2 strips of Black-Out tape
- 1 alcohol wipe



## -ATTENTION-

Read and understand all instructions before installing or using this product. Your MirrorShellz have been specifically designed to fit your truck, so no modifications to your original equipment should be required. If after reading these instructions you have any further unanswered questions please call our toll-free number (844-918-3688 EXT 2) for help between 8 am to 5 pm Pacific Time M-F. Any modification or unintended use of this product shall immediately void all manufacturer warranties. The manufacturer disclaims all liability for injuries to persons and property resulting from modifications to, or unintended use of this product.

## -PREPARATION-

*(Please read all Preparation instructions before attempting to install)*

- Your MirrorShellz are secured in place with 3M™ Automotive Acrylic Foam Attachment Tape. Optimal temperature for installation is between 20°C (68°F) to 38°C (100°F) and **never below** 15°C (60°F). If ambient temperature is below 15°C, a hair dryer may be used at your discretion to warm the surface.
- Make sure your factory mirror cap is clean, dry, and free of debris. Use a cleaner that will remove oil/grease to clean the surface, followed by wiping the bonding surface areas **thoroughly** with regular isopropyl rubbing alcohol and a clean lint-free white cotton rag or clean disposable toweling. Do not use shop rags which may have dirt or oily residues. For superior results use [3M brand Prep Solvent 70](#) or similar products available at many auto stores.

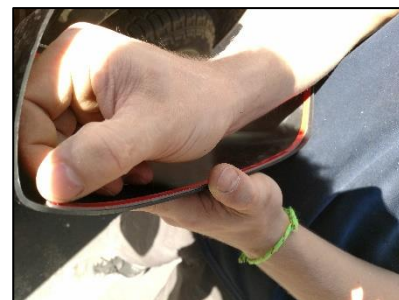
## -INSTALLATION -

1. Before removing the red backing to the 3M tape, perform a dry fit. Follow steps 5-9 without removing the red backing as a test-run, and to ensure proper fitment
2. After you have thoroughly cleaned the mirror use either the provided alcohol prep wipe, or a 3M brand prep solvent to prepare the areas of the mirror where the tape will be attached

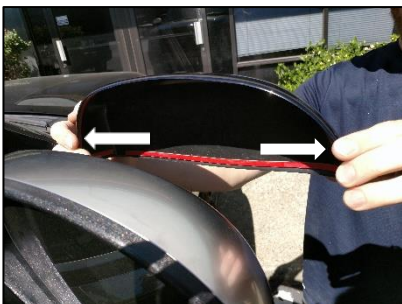
3. Apply the provided blackout along the lower edge of the factory mirror cap to prevent any chrome showing through in these areas.



4. Remove red backing to 3M double-sided tape on reverse side of Mirror Cover



5. Begin installing the mirror cover by carefully pulling the edges out to widen the opening which will decrease the likelihood of the tape touching down prematurely.



6. Tip the top edge of the mirror cover towards yourself, so only the bottom edge of the cover will come into contact with the factory mirror cap.



7. Slowly tip the top edge of the cover back towards the mirror making sure that the bottom edge of the MirrorShell continues to cover all the original factory mirror cap.



8. Check around each side of the cover to ensure that no chrome is visible before you begin putting pressure on the taped areas. Shift the cover if necessary to perfect the fitment. After you are satisfied with the fitment of the cover, begin putting pressure on all taped areas.



**NOTE for Maximum Adhesion:** The acrylic foam tape used to adhere your MirrorShellz is "pressure sensitive", so making sure there is sufficient pressure applied to each of the taped areas is vital to achieve optimum adhesion of your MirrorShellz to your bumper. It is also recommended that you come back a few hours later, or the next day, to give each piece another pressure rub to ensure the best adhesion. Allow the tape adhesive to set up for at least 24 hours before washing your truck. Maximum adhesion is reached after 3-5 days in temperatures above 70 degrees, longer if it is cooler. Once the adhesive has fully bonded to a properly prepared surface, it is nearly impossible to remove the MirrorShellz without damaging them.

#### -CARE-

Care for your MirrorShellz like you would any fine paint finish. Use high quality cleaning products designed specifically for car care.

- **Gloss finishes:** Oftentimes, minor scratches can be buffed out on the gloss finishes. Rubbing compounds can be used with a mechanical buffer, for deeper scratches.
- **Matte finishes** are much more susceptible to abrasions, leaving a "glossy sheen" on the finish, which are generally permanent. Do not attempt to buff out scratches/abrasions on your matte finish, as this will generally make the damage worse. Avoid excessive friction when trying to remove anything stuck to the matte finish surface and keep cleaning rags/water clean and abrasive free. Abrasive brush-type car washes are not recommended, as they can abrade the Matte finish. Brushless car washes are acceptable.