

#DUO



2014-2019 Toyota Tundra Front Bumper Overlays



ITEMS INCLUDED

- Side Covers: 2
- Preinstalled 3M tape
- 1 Adhesion Promoter Packet

TOOLS REQUIRED

- Isopropyl Alcohol
- 10mm socket/wrench
- 12mm socket/wrench
- Clip removal tool/
flathead screwdriver



Perform dry-fit
before installing



Warm surfaces and 3M
tape with a heat gun if
ambient temperature
is below 68° F.



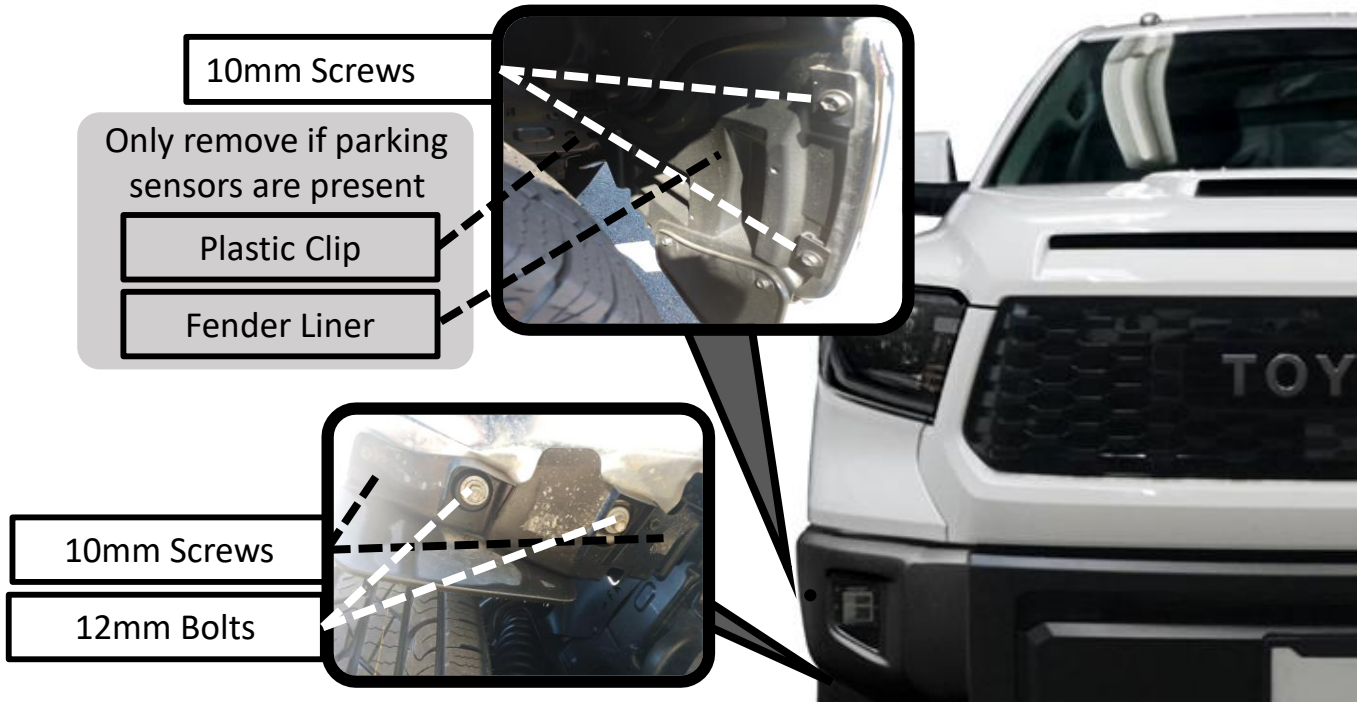
Any modification or
unintended use will
void the warranty

PREPARATION

1. BumperShellz™ are secured using the highest quality 3M Auto-Grade tape. The optimal temperature for installation is between 68°F and 100°F. If the ambient temperature is below 68°F use a heat gun or hair dryer to warm the bumper and 3M tape immediately prior to installation.
2. Ensure the bumper is clean. After a quick wash use Isopropyl alcohol or Acetone with a brand new, lint-free cloth to thoroughly clean the bumper. For professional results use 3M brand prep solvent 70, Adhesion Promoter 94, or a similar vinyl adhesion promoter product available at many auto stores.
3. Dry fit all parts before removing 3M tape to check for fitment and practice the installation method before the attachment is permanent.

The degree to which you follow these preparation instructions will determine the quality of the installed product. Please follow all instructions, and be patient. If you are unsure of any area of the installation after reading these instructions, please call us at 844-918-3688, and we will answer any questions that you have.

1. Remove lower trim screws, bumper bolts in specified areas. Also remove lower fender liner and sensors for trucks with parking sensors. Repeat on both sides.



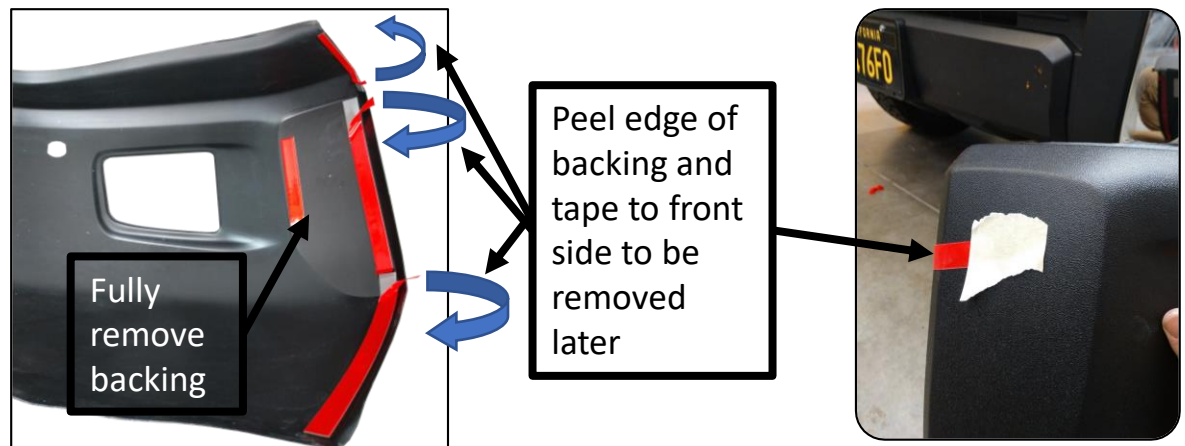
Remove Parking Sensors (Only for Tundras with parking sensors)



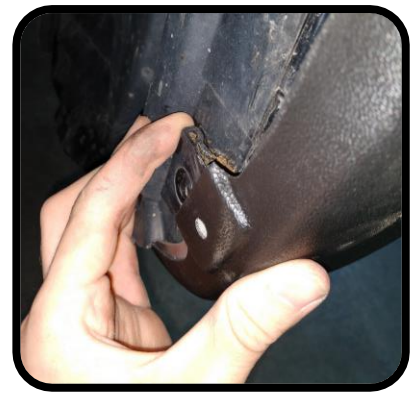
2. Perform a dry-fit of the product by following all installation instructions with the red backing to the 3M tape in-tact.

3. Clean the bumper surface thoroughly, and then wipe down with isopropyl rubbing alcohol. Remove cloth from included adhesion promoter packet and use it to wipe areas where the 3M tape will be applied on the bumper.

4. Begin removing red backing to 3M tape according to pictures below.



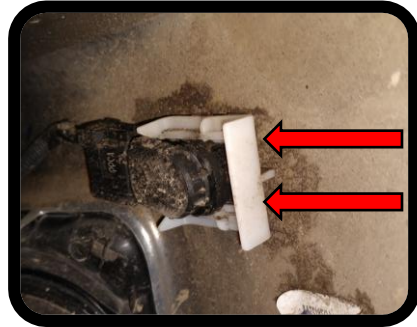
5. Slip the BumperShellz over bumper starting with the edge facing the wheel well. Ensure the lower part of the cover is tucked between the lower valance of the fender liner and the bumper.



6. Tuck the upper edge of the bumper cover underneath the plastic top cap on the bumper.



7. The BumperShellz should now appear fully installed, but do not put pressure on the taped areas yet. If sensors are present, align the sensor hole in the bumper cover with the sensor hole in the bumper. Reinsert the sensor through the hole. If you are experiencing trouble reinserting the sensor, lightly sand the inside of the sensor hole on the cover to widen it slightly until the sensor can be pushed through.



8. Once you are fully satisfied with the position of the cover and ensure no chrome is visible where the inboard edge of the bumper cover meets the center, you can begin putting firm pressure on the taped areas. Peel off the red backing that you have taped to the front of the cover, and put firm pressure on those areas as well. Reconnect parking sensors, and reattach the white sensor clip.

9. Repeat process on opposite side.

10. Reinstall all clips, hardware, and trim removed at the beginning of the process.

11. Wait 48 hours before taking your truck through a car wash or on highway driving.

